

FOREST HOUSE A

Footprint of building: 88.3 m²

Net floor area: 55.8 m²

Measurements (a/b/h): 8.5m/13.8m/6.4m

The forest house with spacious layout has a big terrace, where the sun appears in the morning and evening. Glass doors of the living-room and dining-room open to the terrace. A compact wardrobe and WC block and kitchen are near the entrance. The bedroom and living-room have high ceilings, the natural light penetrates through the roof-top window.

Optional: Construction in conformity to the passive house method.

The most beneficial location on plot is shown on project plan.

- 1 bedroom (12.8 m²)
- Living-room with dining-room
- Kitchen
- Bathroom
- Wardrobe

Roof-top and facade material: manually rolled zink-coated metal sheet

PRICE: FROM € 50 220 + VAT

FOREST HOUSE B

WITH SAUNA

Footprint of building: 102.2 m²

Net floor area: 78.2 m²

Measurements (a/b/h): 8.5m/16.1m/6.4m

The forest house with spacious layout has a big terrace, where the sun appears in the morning and evening. Glass doors of the living-room and bedroom open to the terrace. A compact wardrobe and sauna block and kitchen are near the entrance. The bedroom and living-room have high ceilings, the natural light penetrates through the roof-top window.

There is an additional floor on the spot of sauna block, which can be used as a sleeping place or cabinet.

Optional: Construction in conformity to the passive house method.

The most beneficial location on plot is shown on project plan.

- 1 bedroom (11.9 m²)
- Additional level (14.4 m²)
- Living-room with dining-room
- Kitchen



- Bathroom
- Sauna
- Wardrobe

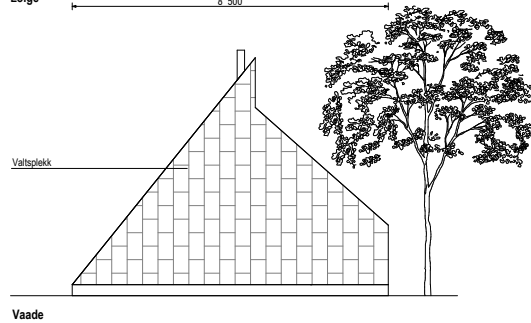
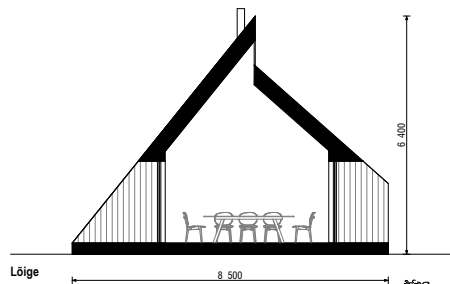
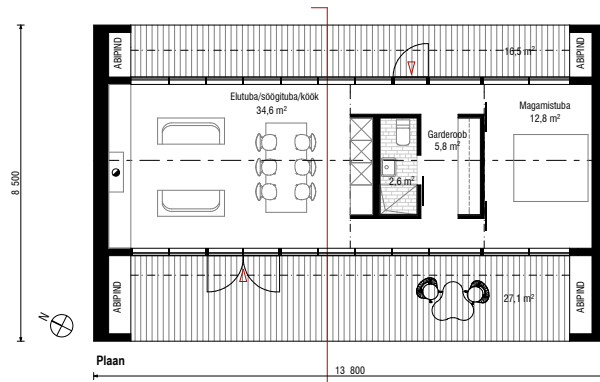
Roof-top and facade material: manually rolled zink-coated metal sheet

PRICE: FROM € 70 380 + VAT

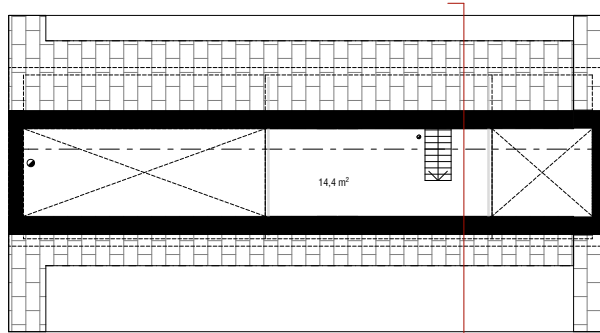
PROJECT DESIGN OF THE HOUSE

- preliminary architectural project design € 900 + VAT
- main architectural project design € 1000 + VAT
- architectural working design € 500 + VAT
- approval for each object at KOV and from other required institutions (fire department, Environmental Board, National Heritage department, etc.) € 1750 + VAT

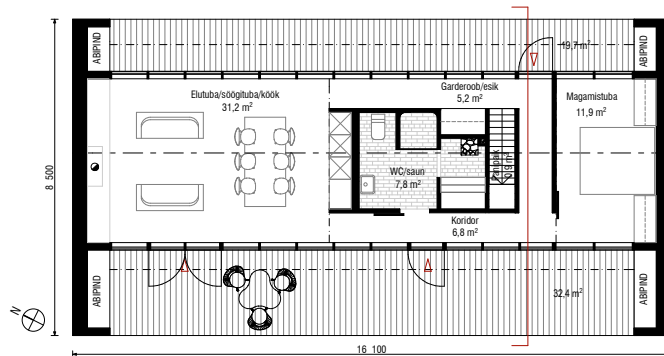




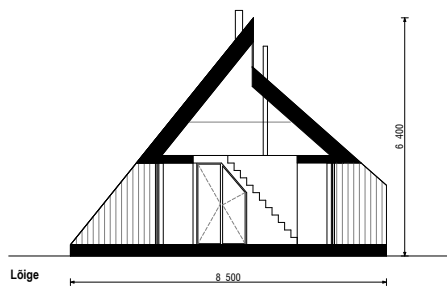
Metsamaja
 Ennisealune pind 88,3 m²
 Netopind 55,8 m²



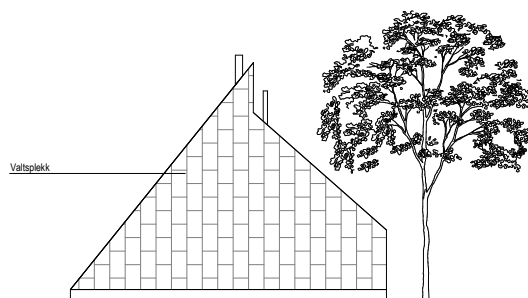
II korrus



I korrus



Lõige



Vaade

Metsamaja saunaga
 Ehitisealune pind 102,2 m²
 Netopind 78,2 m²



yrta.ee

info@yrta.ee



yrta.ee

info@yrta.ee