

OUTDOOR KITCHEN

Footprint of building: 42.2 m²

Net floor area: 24.2 m²

Measurements (a/b/h): 4.8m/8.75m/4.65m

The outdoor kitchen has open dining-room with the integrated worktop. The worktop provides space for a sink and grill. Besides, the outdoor kitchen has a lockable shed/storeroom.

The most beneficial location on plot is shown on project plan.

- Kitchen /dining-room (20.2 m²)
- Shed /storeroom (4 m²)
- Roof is the ideal additional area for solar panels

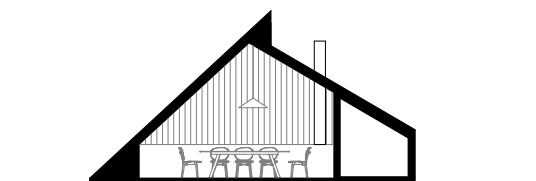
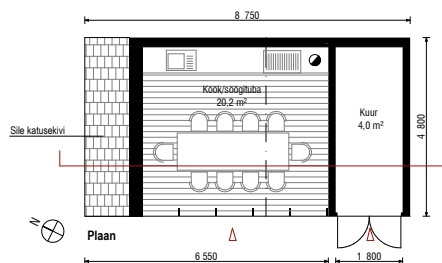
Roof-top material: dark roof tiles

Façade material: vertical boards, treated with defensive agent

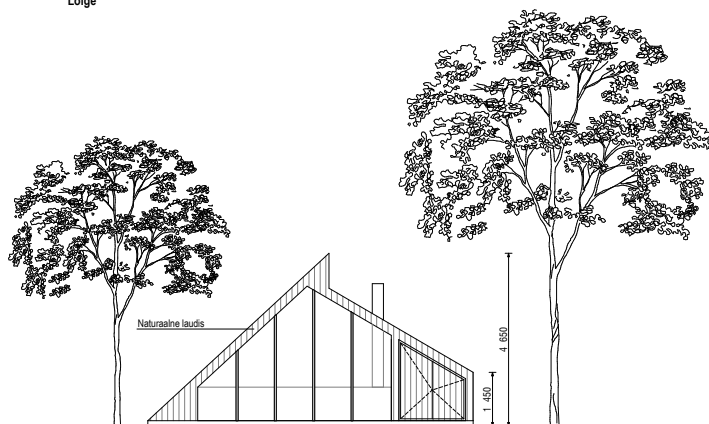
PROJECT DESIGN OF THE HOUSE

- preliminary architectural project design € 350 + VAT
main architectural project design € 450 + VAT

PRICE: FROM € 5630+ VAT



Lõige



Eestvaade

Väliköök
 Ehitissalune pind 42 m²
 Netopind (1.6m) 24.2 m²

